

Median FEV1 Percent Predicted for Patients 6 to 17 Years

Memorial Medical Center Foundation & Long Beach Memorial Medical Center, 2017

97.8

Care Center Network - Median of All Center Values, 2017

93.3

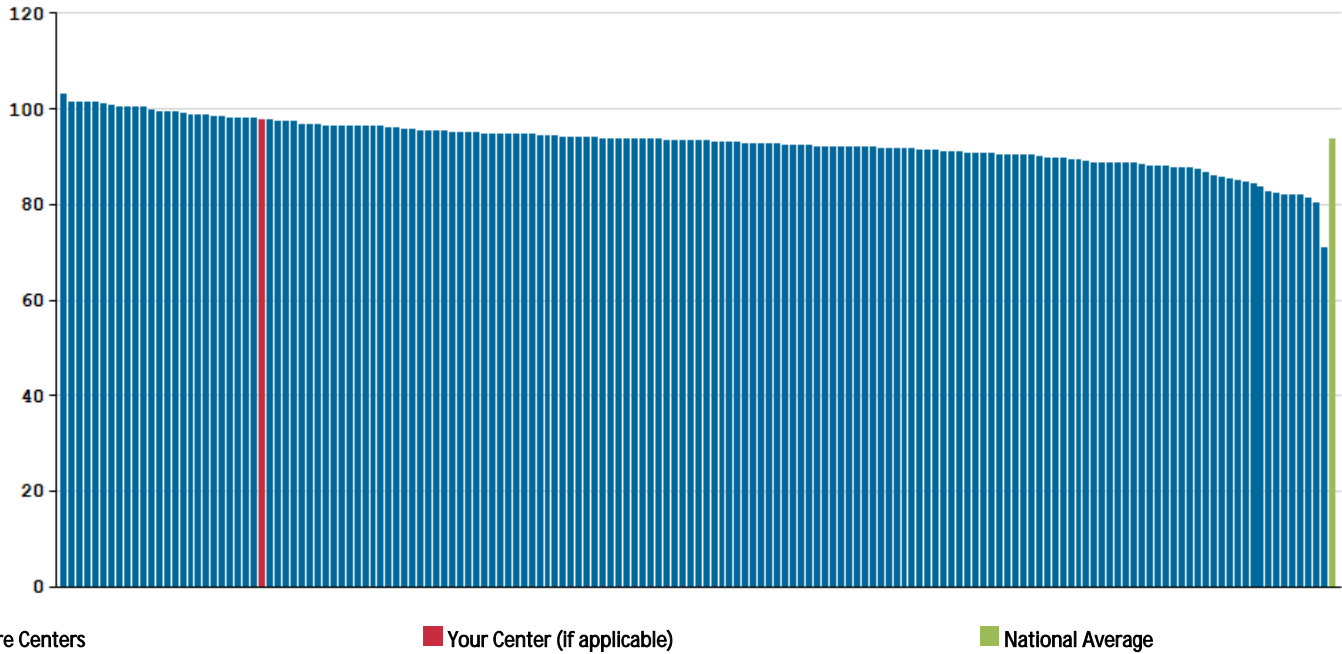
Care Center Network - Average of Top 10 Center Values, 2017

N/A

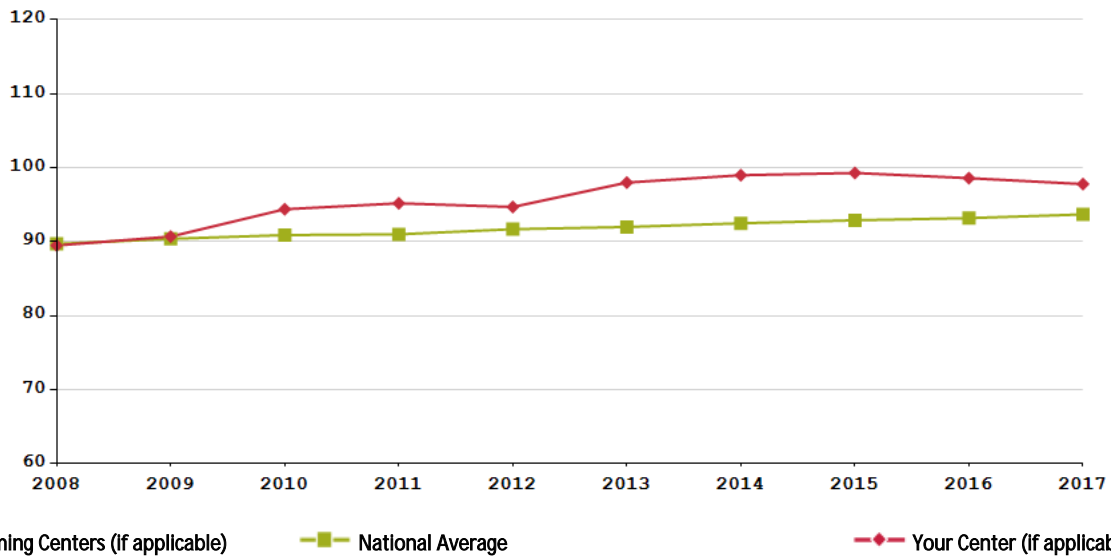
National Average of All Patients, 2017

93.7

Median FEV1 Percent Predicted for Patients 6 to 17 Years in 2017, by Center



Median FEV1 Percent Predicted for Patients 6 to 17 Years, 2008-2017



	2008	2009	2010	2011	2012	2013	2014	2015	2016	2017
Your Center	89.5	90.7	94.4	95.2	94.7	98.0	99.0	99.3	98.6	97.8
National Average	89.7	90.4	90.9	91.0	91.7	92.0	92.5	92.9	93.2	93.7
Ten Best Performing Centers										